

Types:

Type: A



Type: B



Type: C



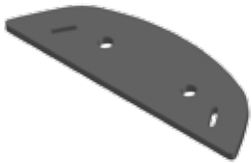
Type: A The standard horseshoe: cold-formed up to 5mm.

Type: B The bar shoe: ideal for stability and weight distribution on the hoof.

Type: C Medical plates: therapy shoes that relieve the center of the hoof and considerably reduce sinking into loose ground.

Types of Stainless Steel Clips:

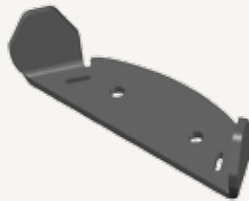
No Clips (OK)



Toe Clips (ZK)



Quarter Clips (SK)



All types come in two forms:

For an optimal fit, Mighty Horses' high performance horseshoes are available in special hoof shapes for front and rear hoofs. The appropriate size can be determined by using a hoof-sizing template (shoes are offered in sizes 3, 3.5, 4, 4.5, 5, 5.6, 6, 6.5, 7 and 7.5).

Classification:

Example:

A 6.5 V OK
Type / Size / Form / Clips

Incredibly easy hoof-sizing using a template.



Mighty Horses

Unimet GmbH & Co KG
Ungenach 63 • 4841 Ungenach
Austria



MIGHTY HORSES

HIGH PERFORMANCE HORSESHOES
MADE IN AUSTRIA

Developed for horse jumping, dressage, racing, eventing,
and recreational horseback riding.

MIGHTY HORSES

High-Performance Horseshoes made in Austria

There are powerful resources in every sport horse that can only be utilized when given the best conditions. Mighty Horses' high-performance horseshoes are designed to meet professional requirements and provide optimal ground contact, as well as uniform weight distribution across the entire hoof. These are intended for powerful performance with less risk of injury.

Mighty Horses' high performance horseshoes were developed together with leading professionals in equestrian sports, veterinary medicine, and animal therapy.

More Grip: Quick and easy mounting.

The threads for screwing on the studs can be selected for either the metric or imperial system.

Functional Designs: Individual forms and clips.

In addition to Mighty Horses' standard high-performance horseshoes, bar shoes and medical plates (esp. for therapeutic purposes) are available. Stainless steel inserts are also available in three versions: no clips, toe clips, and quarter clips.

Maximum Durability: Up to twice as long as conventional aluminum.

High-strength aluminum alloy, which is also used in astronautics, is impressive with its extremely high tensile strength. Superior wear resistance is achieved particularly with unique stainless steel inserts in the stressed front area.



**Prominent Color Schemes:
Set personal accents.**

In addition to the Mighty Horses' standard blue, the aluminum body of these high-performance horseshoes can be obtained in red, gold, or bronze.

**Optimal Load Carrying Capacity:
Lighter and more secure running.**

An increased horseshoe surface reduces sinking into tournament surfaces and thus ensures more precision with reduced force.

**Damping Trots:
Using gel injection ports.**

A formfitting horseshoe-hoof connection is made possible with bar shoes and medical plates. Damping technology is ideal for gentle movement and is also used in racing shoes.

**Less Weight:
Less stress on the horse.**

Mighty Horses' high-performance horseshoes have a striking weight advantage compared to classic steel horseshoes due to their aluminum base material.

**Optimal Fit:
The perfect fit to the horse's hoof.**

Mighty Horses' high-performance horseshoes are available in ten different sizes (in half-sizes from 3 to 7.5). Specially adapted shapes have been developed for the different dimensions of front and rear hooves. The variety within 60 different types also significantly reduces the workload for farriers. We have made the right selection simple for everyone by providing two hoof-sized stencils.

**Dynamic Shedding:
More power and agility.**

The stainless steel insert is mounted on the slightly milled groove at the front of the aluminum base. The resultant slope makes for more rounded shedding of the frogs and thus supports the dynamic movement process.

